



Chiho AONO  
Works 2000-2020



DOMANI -The Art of Tomorrow-  
The National Art Center (Tokyo Japan)

## Organicform and patterns

I've been interested in the tension of water surface, the eternity of water movements and its shapes for many years. Recently I'm working on the theme of its gravity.

The reason of introducing the organic physical form is to let the audience become emotionally involved easily. However, the form itself is not exactly recreated the liquid movement physically.

Which makes the shape to be transformed in an ungainly way, and having a movement against the gravity like the mollusk with it's willingness. People sees stories and emotions when the shape makes those non-physical, unrealistic movements.

Also the patterns on the surface makes people to be associated with animal being's protective or aposematic coloration, and it blur the boundaries between objects and space.for that reason causes some tricks that the art work has viscosity movements even it is an immobile object.



## 有機的な形態と模様

私は長年、液体の持つ表面張力や、水が自然界を巡っていく永遠性とその形状に興味を持ってきました。近年は重力をテーマにした作品を主に手がけています。

しかし、流動体の物理的な運動を正確に再現しようとしているわけではありません。形状は不恰好に変形したり、意識を持った軟体動物であるかのように、重力だけでは発生しない方向性を持っています。形状が物理的に一致しない動きを持っている場合、その中に物語性や感情などが生まれ、鑑賞者に感情移入をたやすく促します。

また、表面に施された模様は、生物の持つ保護色や警戒色を連想させます。動きの瞬間をとどめた不動なオブジェにもかかわらず、作品が粘性を持って動いているような効果を、それによって与えているのです。



a musical instrument II

Size/ L51×W48×H20 cm

Material / Stoneware, Plastic accordion for children, 2019



No title (no.20-A01)

Size/L31×W20×H25cm  
Material / Stoneware, 2020



No title (no.20-R01)

Size/L15×W11×H19cm  
Material / Stoneware, 2020



No title (no.17-F01)

Size/L31×W20×H25cm  
Material / Stoneware, 2017



No title (no.20-A02)

Size / L45×W41×H19 cm

Material / Stoneware, 2020



**Waku-Waku-Waku IV**

Material / Gips, Acrylic paint, Urethane foam  
at Koike pharmacy-Nakanajo Biennale 2019



Waku-Waku-Waku II・III

Material/gips,Acrylic paint,Urethane foam  
at Abiko International Open-Air Art Exhibition  
2016







Metamorphose I  
Size / L45×W20×H70cm  
Material / Stoneware, 2013



Metamorphose II  
Size / L35×W15×H37cm  
Material / Stoneware, 2013



Modern “Suikinkutsu” (water koto cave) 2012

Material / Stoneware, Timber, Aquarium pump, Tube, Headphones



a cell

Size / L45×W20×H75cm

Material/Stoneware

2012



a Mollusk I  
Size / L15×W15×H40cm  
Material / Stoneware  
2012



a Mollusk II  
Size / L16×W14×H40cm  
Material / Stoneware  
2012



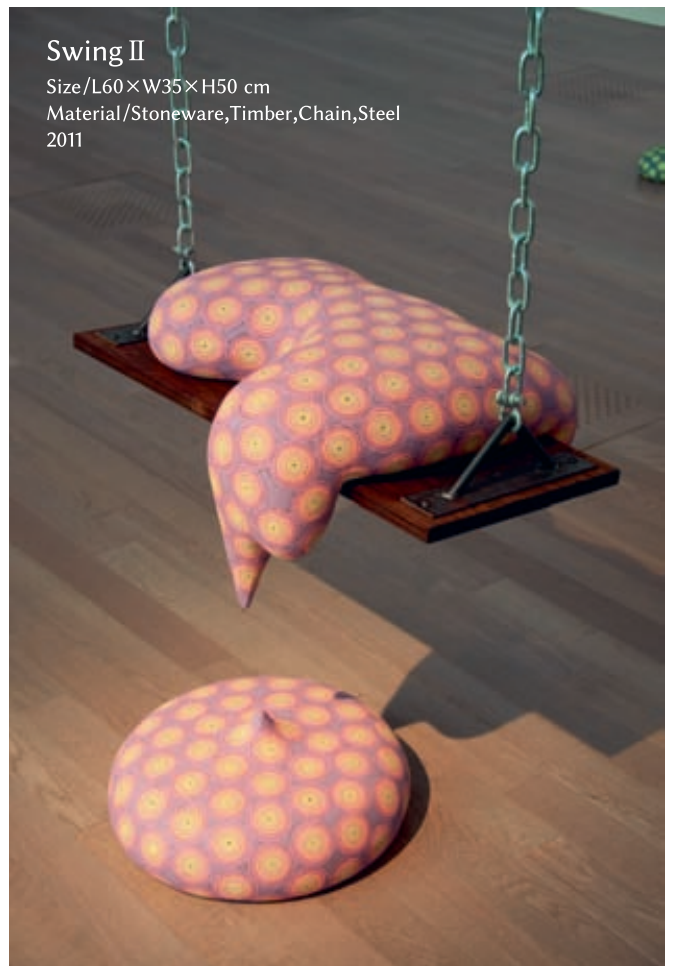
a Mollusk III  
Size / L16×W12×H25cm  
Material / Stoneware  
2012



No title (no.11-A01)  
Size / L30×W14×H45cm  
Material / Stoneware  
2012



Exhibition "New Millennium Japanese Ceramics : Rejecting Labels & Embracing Clay"  
at Northern Clay Center (Minneapolis,USA), 2011





**Beautiful life**  
Size / L25×W20×H15cm  
Material / Stoneware  
2010





Natsume (Teaware-for-viewing)

Size / L10×W10×H19 cm

Material / Stoneware

2010



### Trace of rain

Size / L40×W40×H140 cm

Material /Stoneware

at Salzfertigerhaus Gmunden Austria

2009



## Overflow and fall

Size / L25×W20×H40 cm

Material / Stoneware

at Salzfertigerhaus Gmunden Austria

2009



The gentle Sound, The gentle Skin

Size / L80×W30×H90 cm

Material / Stoneware

2009



Sink deeply

Size / L50×W25×H47 cm

Material / Stoneware

2009



1



2



5

# Various R



7



8



3



4

# Rhythmen



6



9



10



11



12



15



17



18





13



14

Various Rhythmen  
Size / L10×W10×H10 cm  
Material / Stoneware  
2009



16



19



20



No title (no.1101)  
Size/L40×W15×H25 cm  
Material/Stoneware, 2011



clouds and rain  
Size/L24×W19×H25 cm  
Material/Stoneware, 2008



vestiges of soft rain  
Size/L19×W13×H53 cm  
Material/Stoneware, 2008



## Curse

Size/L120×W60×H80 cm  
Material/Stoneware, Timber  
2006



The way which has many  
Size/L80×W30×H65 cm  
Material/Stoneware, 2006



The connected Rhythm  
Size/L35×W15×H25 cm  
Material/Stoneware, 2006



### Drain

Size/L20×W20×H35 cm  
Material/Stoneware, 2006





Blur  
Size/L40×W40×H35 cm  
Material/Stoneware, 2007



Utsu Utsu  
Size/L20×W20×H35 cm  
Material/Stoneware, 2007



I'm going to me  
Size/L30×W30×H60 cm  
Material/Stoneware, 2006

Flowing constantly  
Size/L180×W180×H195 cm  
Material/Stoneware,Timber  
2006



photo : Mareo SUEMASA



## The spirit of tree

Size / L40×W40×H50 cm

Material / Stoneware, Tree

TSUZUKI MINKA-EN (Folk House Garden), 2006

photo : Mareo SUEMASA





photo : Mareo SUEMASA



photo : Mareo SUEMASA

### Boil and Gush

Size/L40×W40×H70 cm

Material/Stoneware, traditional kitchen range  
TSUZUKI MINKA-EN (Folk House Garden), 2006



photo : Mareo SUEMASA

### Rain of malice

Size / L120×W80×H80cm

Material/Stoneware, 2005



Stagnant and progress

Size/L25×W25×H30 cm  
Material/Stoneware, 2005





**hang down**

Size/L75×W75×H110 cm  
Material/Stoneware, Timber  
2004



The blue feeler of the moon  
Size/L12×W15×H10 cm  
Material/Stoneware, 2004



a haze  
Size/L20×W28×H30 cm  
Material/Stoneware, 2004



The salamander which looks at a dream  
Size/L12×W15×H10 cm  
Material/Stoneware, 2004



the alga  
Size/L18×W18×H20 cm  
Material/Stoneware, 2004





The sway alga

Size/L60×W60×H130 cm

Material/Stoneware, 2004

photo : Mareo SUEMASA



photos : Mareo SUEMASA





In deep sea I  
Size/L30×W20×H20 cm  
Material/ Stoneware, 2003



Sigh  
Size/L25×W20×H23 cm  
Material/ Stoneware, 2003



a natural law  
Size/L240×W150×H240 cm  
Material/Stoneware, 2002

photos : Mareo SUEMASA



Element -Fire-  
Size/L25×W25×H40 cm  
Material / Ceramic



Element -Air-  
Size/L27×W23×H35 cm  
Material/Stoneware, 2002



Element -Water-  
Size/L20×W20×H37 cm  
Material / Ceramic



Element -Ground-  
Size/L25×W20×H27 cm  
Material/Stoneware, 2002



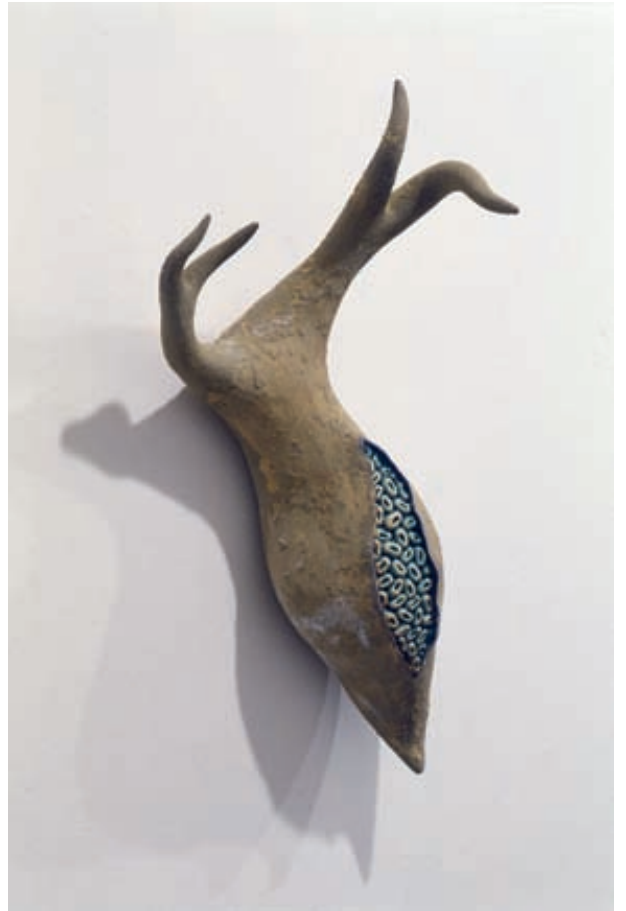
**Forest**

Size/L90×W90×H230 cm

Material/Stoneware, 2001



Sound of a ball  
Size/L18×W18×H20 cm  
Material/Stoneware, 2001



between the body to the bodies  
Size/L20×W18×H40 cm  
Material/Stoneware, 2001



Clouds sway  
Size/L20×W20×H50 cm  
Material/Stoneware, 2001



Turtle grass  
Size/L45×W12×H50 cm  
Material/Stoneware, 2001



photo : Mareo SUEMASA



## Distillation

Size/L400×W400×H200 cm

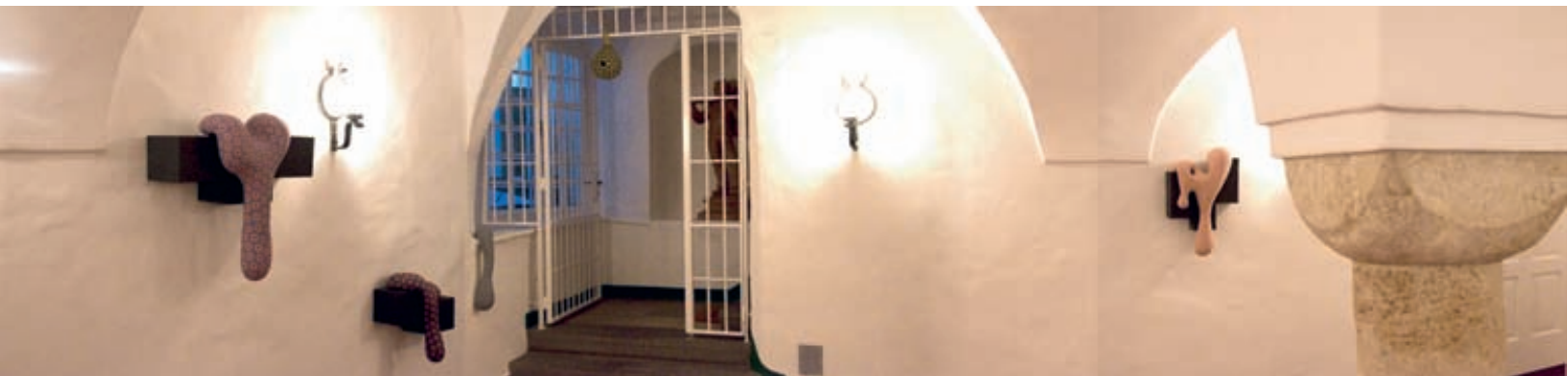
Material/Stoneware, 2000







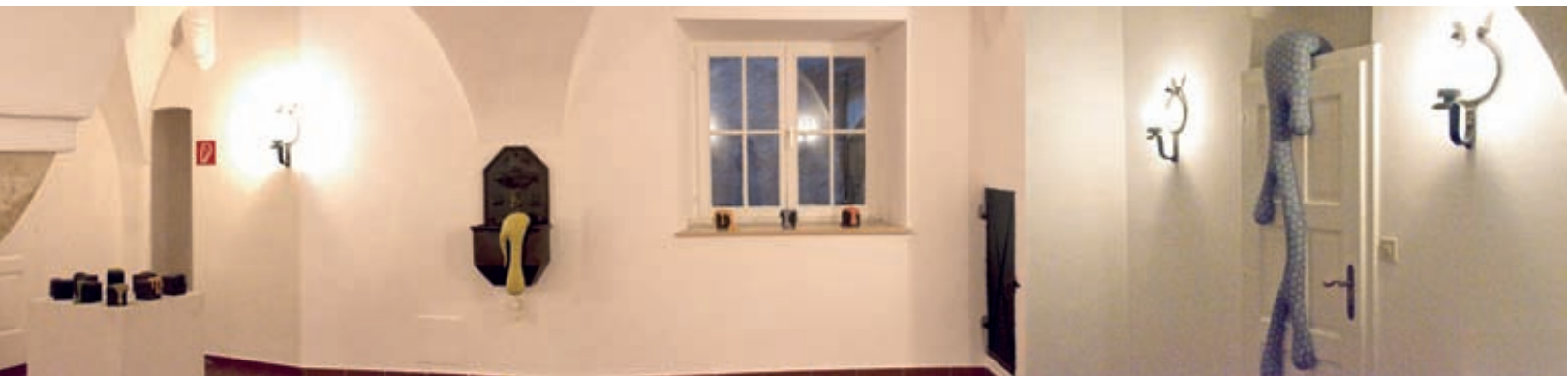
photos : Mareo SUEMASA



- 1974 Born in Yokohama,Japan
- 1997 Graduated Tama Art University
- 1999 Graduated Master of FineArt at Tama Art University
- 2010 Artist of Japanese Government Overseas Study Programme for Artist.
- 2012 Graduated Master of Plastic Concept / Ceramic at Artuniversity Linz

### Solo & Group exhibition

- 2019 Nakanojo Biennale2019 Gunma prf.,Japan.
- 2017 SELVES II/ORIE art gallery Tokyo,Japan.
- 2016 Abiko International Open Air ExhibitionJapan, Artist in Residence.
- 2015 „Nineteenshirt “ La Musery,(Wien Austria)
- 2014 “Something is in Motion” , Messnerhaus (Mieming, Tirol)
- 2013 DOMANI : The Art of Tomorrow 2013” Exhibition THE NATIONAL ART CENTER (Tokyo,Japan)  
C. Aono, F.J. Altenburg, R. Gschwantner Hausgalerie im Kuenstlerhaus Wien(Austria)
- 2012 SICHTWEISE Galerie Zauner (Linz,Austria)
- 2011 Kalte Gallery OO Kunstverein (Linz,Austria)  
New Millennium Japanese Ceramics: Rejecting Labels & Embracing Clay  
Northern Clay Center (Minneapolis,USA)
- 2010 Topseller-Geld,wirtschaft&Freunde Gallery OO kunstverein (Linz,Austria)  
Art fair Linz Landes Gallery (Linz,Austria)  
The Pleasure of Tea ceremony Gallery Utsuwa-kan (Kyoto,Japan)
- 2009 The Power of Decoration—A Viewpoint on Contemporary Kogei The  
National Museum of Modern Art-Craft&Design (Tokyo,Japan)  
The 6th International Ceramics Biennale Kapfenberg (Kapfenberg,Austria)  
/ Keramik Museum Westerwald (Germany)  
Trace-of-rain Salzfertiger haus (Gmunden,Austria)  
Tropfenskulpturen Galerie Zauner (Linz,Austria)



- 2007 World Ceramic Biennial 2007 Icheon World Ceramic Center (Korea)
- The 43th Kanagawa Art Exhibition 2007 Kanagawa Prefectural Gallery (Yokohama, Japan)
- The transparent wave returns Gallery Motomachi (Yokohama, Japan)
- 2006 Clay work by freeter Aoyama spiral (Tokyo, Japan)
- Art in the traditional house Ohtsukasaisyoudo ruins Park, Yokohama
- Curse gallery sou (Tokyo, Japan)
- 2005 WAVE AGE Sudou Museum (Tokyo, Japan)
- Preference Sanai gallery (Tokyo, Japan)
- International ceramics festival 2005 Mino Museum of Modern Ceramic Art (Gifu, Japan)
- The 41th Kanagawa Art Exhibition 2005 Kanagawa Prefectural Gallery (Yokohama, Japan)
- Mulriple San-ai Gallery (Tokyo, Japan)
- 2004 hang down exhibit Live (Tokyo, Japan)
- 2003 The sway alga Sudou Gallery (Tokyo, Japan)
- Message from young artist Sudou Gallery (Tokyo, Japan)
- Peace of one hundred years =treasure= exhibit Live (Tokyo, Japan)
- 2002 a natural law exhibit Live (Tokyo, Japan)
- 2001 Forest Toki-artspace (Tokyo, Japan)
- 2000 Distillation Nabis Gallery (Tokyo, Japan)
- 1999 Spiral Nabis Gallery (Tokyo, Japan)

### Award

- 2010 Japanese Government Overseas Study Programme for Artists
- 2005 The 41th Kanagawa Art Exhibition 2005 (second prize)
- 2003 Message from young artist Sudou Gallery (second prize)
- 1999 chiro Fukuzawa Prize for graduated at the head of Ceramic class.



Chiho AONO

<https://chiho-a.com>

[chiho@chiho-a.com](mailto:chiho@chiho-a.com)