



Chiho AONO

Works 2000-2022

青野千穂 作品集

Chiho AONO works 2000-2022



Organicform and patterns

I've been interested in the tension of the water surface, the eternity of water movements, its gravity and its shapes for many years.

The reason for introducing the organic physical form is to let the audience become emotionally involved easily. I try to create the illusion of viscosity movement although it is an immobile object.

However, the form itself does not exactly physically recreate the liquid movement. It often seems as if the smooth movement of the liquid is caught at the very moment when surface tension has just the opportunity to resist gravity. This creates the impression of a counter-movement similar to the mollusk. Viewers associate feelings and stories when the shape seems to perform those unphysical, unrealistic movements.

In transition from dead to living matter, the objects seem to develop a form of self-will.



The surface pattern also started with a weave pattern inspired by fluid- like shapes and accompanying ripples in water. I developed from there and drew a motif of circles like ripples.

Since I started living in Europe, I have been influenced by designs that advocate the fusion of life and art, such as William Morris' wallpaper with continuous drawings of plants and animals, and started to draw similar motifs.

If a matte color is used instead of glaze, the texture of the work will no longer look typically ceramic, but will have a mysterious texture like fabric. It frees the work from the usual materiality of ceramic. I think it's an interesting expression of the mysterious texture that you don't know if it's heavy, soft, or hard. That's one of the reasons why I started to draw motifs that look like they're printed on the fabric of clothes. Both the continuous organic patterns and the concrete motifs are basically inspired by nature.



Freuet Euch des Lebens II
W32×D35×H17cm
Stoneware, 2022



Freuet Euch des Lebens I
W27×D32×H17cm
Stoneware, 2022



Ein rosiges Leben (A rosy life)
W32×D35×H17cm
Stoneware, 2021



Ein heisser Sommertag
W26×D16×H46cm
Stoneware, 2021



Die Schwalben sind zurück
W28×D13×H42cm
Stoneware, 2021



a musical instrument II
W48×D20×H51cm
Stoneware, Plastic accordion for children, 2019





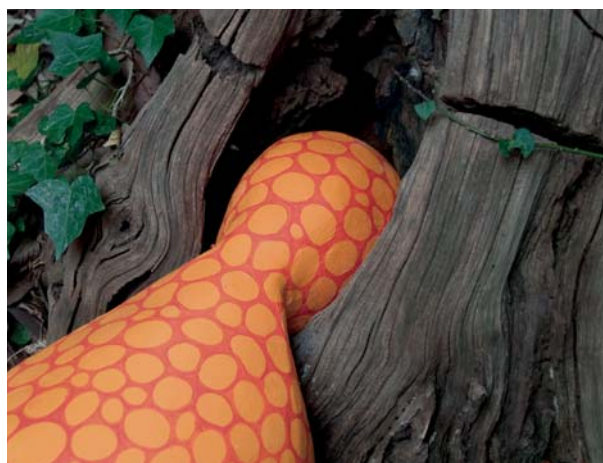
No title (No.20-A02)
W41×D19×H45cm
Stoneware, 2020



Waku-Waku-Waku IV
W32×D35×H17cm
Gips, acrylic paint, Urethane foam
at Koike pharmacy-Nakanojo Biennale 2019



Waku-Waku-Waku II・III
W32×D35×H17cm
Gips, acrylic paint, Urethane foam
at abiko International Open-Air art exhibition 2016





Metamorphose II
W35×D15×H37cm
Stoneware, 2013



Modern “Suikinkutsu” (water koto cave) 2012

Stoneware, Timber, Aquarium pump, Tube, Headphones



a cell
W45×D20×H75cm
Stoneware, 2012





Exhibition "New Millennium Japanese Ceramics : Rejectiong Labels & Embracing Clay"
at Northern Clay Center (Minneapolis,USA), 2011





Beautiful life

W25×D20×H15cm

Stoneware, 2010



Natsume (Teaware-for-viewing)
W10×D10×H19cm
Stoneware, 2010



Trace of rain

W40×D40×H140 cm

Stoneware, 2009

at Salzfertigerhaus Gmunden Austria



Overflow and fall

W25×D20×H40 cm

Stoneware, 2009

at Salzfertigerhaus Gmunden Austria



The gentle Sound, The gentle Skin

W80×D30×H90 cm

Stoneware, 2009



Sink deeply
W50×D25×H47 cm
Stoneware, 2009



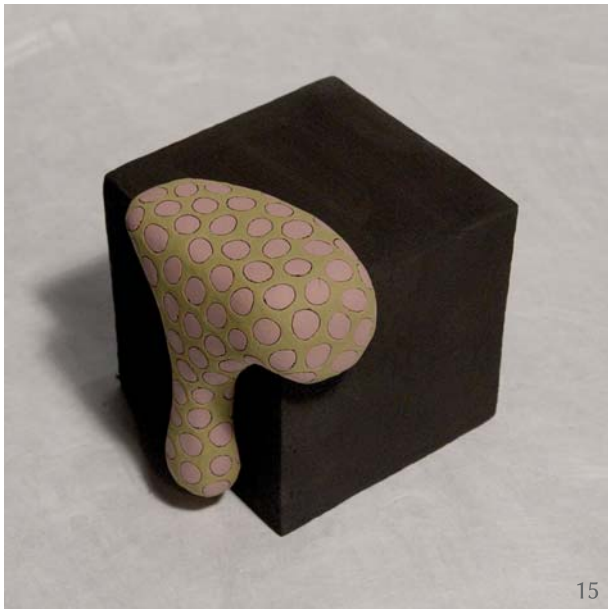
Various





Rhythmen







13



14

Various Rhythmen
W10×D10×H10 cm
Stoneware, 2009



16



19



20

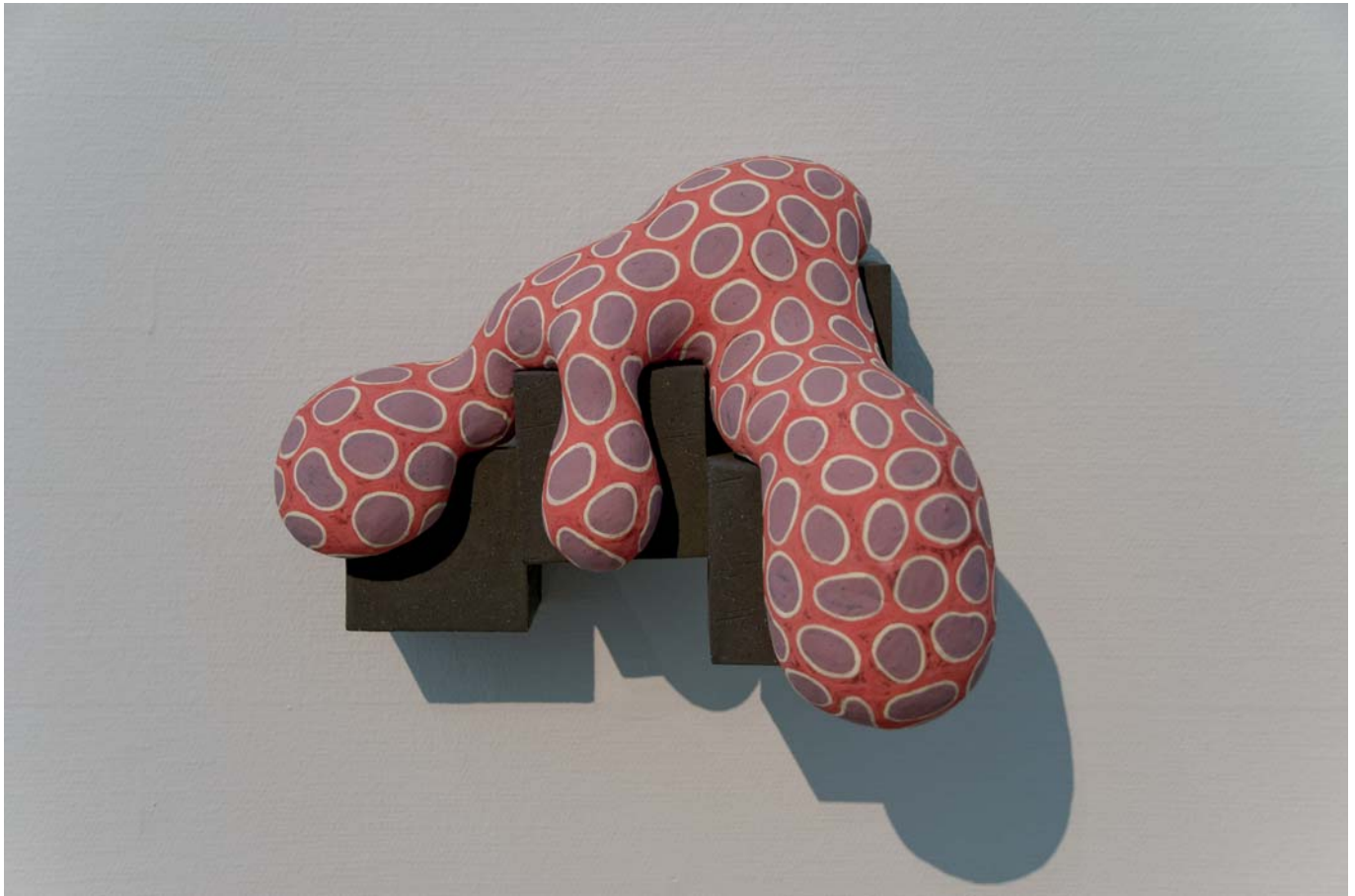




Curse
W120×D60×H80 cm
Stoneware, Timber, 2006



The way which has many
W80×D30×H65 cm
Stoneware, 2006



The connected Rhythm
W35×W15×H25cm
Stoneware, 2006



Drain
W20×D20×H35cm
Stoneware, 2006





Blur
W40×D40×H35 cm
Stoneware, 2007



Utsu Utsu
W20×D20×H35 cm
Stoneware, 2007



I'm going to me
W30×D30×H60 cm
Stoneware, 2006

Flowing constantly

W180×W180×H195cm

Stoneware, Timber, 2006



photo : Mareo SUEMASA



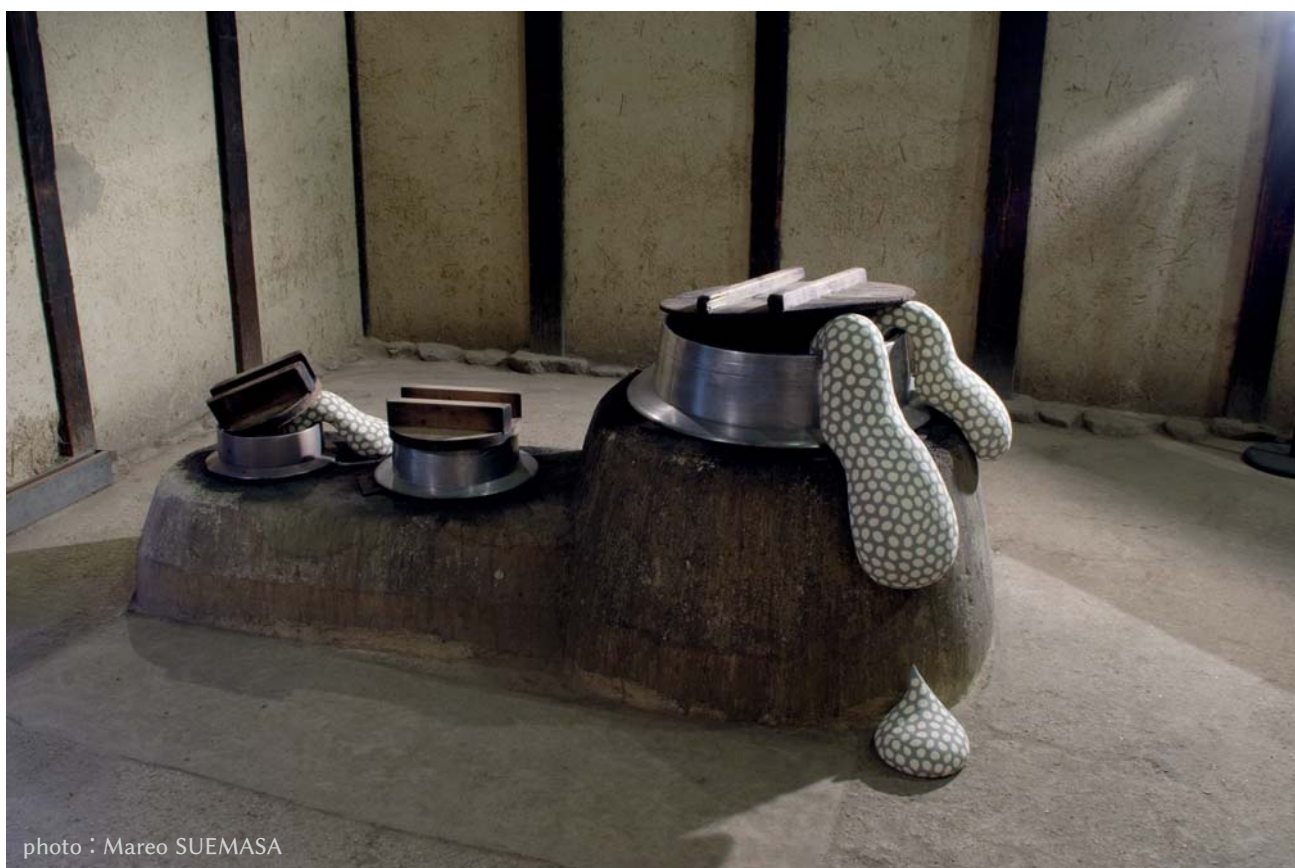
The spirit of tree

W40×D40×H50 cm

Stoneware, Tree, 2006

TSUZUKI MINKA-EN (Folk House Garden)

photo : Mareo SUEMASA



Waku-Waku-Waku

W40×D40×H70 cm

Stoneware, traditional kitchen range, 2006
at TSUZUKI MINKA-EN (Folk House Garden)



photo : Mareo SUEMASA

Rain of malice
W120×D80×H80cm
Stoneware, 2005



Stagnant and progress

W25×D25×H30 cm

Stoneware, 2005





hang down
W75×D75×H110 cm
Stoneware, Timber, 2004

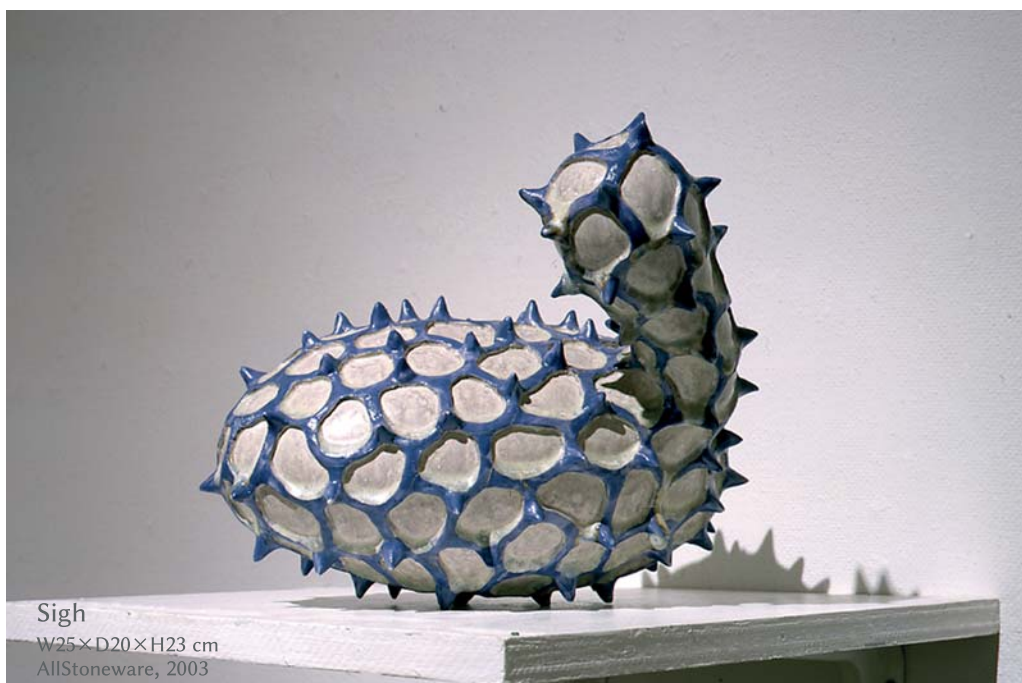




The sway alga
W60×D60×H130 cm
Stoneware, 2004



hang down II
W15×D10×H30 cm
Stoneware, 2003





a natural law
W240×D150×H240 cm
Stoneware, 2002



Element -Fire-
W25×D25×H40 cm
Stoneware, 2002



Element -Air-
W27×D23×H35 cm
Stoneware, 2002



Element -Water-
W20×D20×H37 cm
Stoneware, 2002



Element -Ground-
W25×D20×H27 cm
Stoneware, 2002

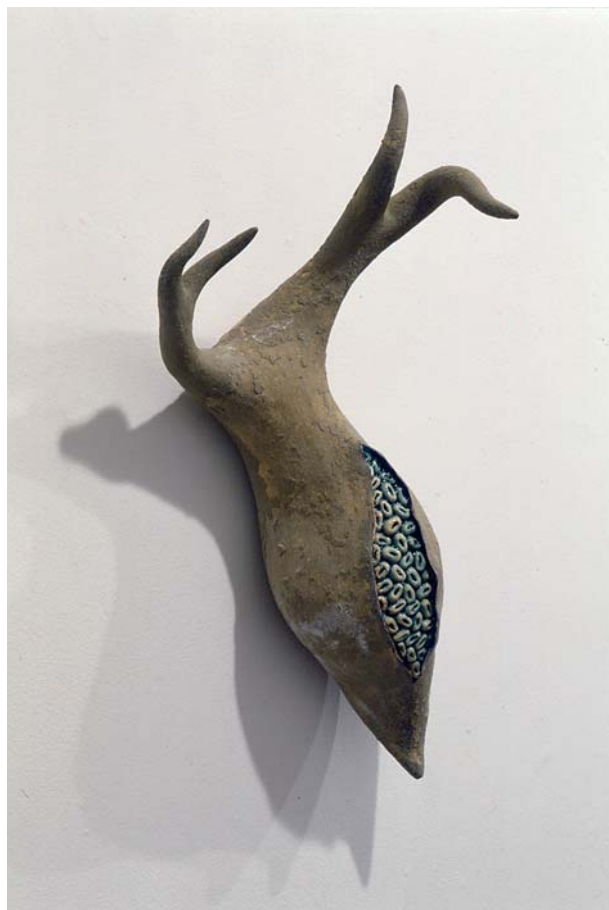


Forest

W90×D90×H230 cm
Stoneware, 2001



Sound of a ball
W18×D18×H20 cm
Stoneware, 2001



between the body to the bodies
W20×D18×H40 cm
Stoneware, 2001



Clouds sway
W20×D20×H50 cm
Stoneware, 2001



Turtle grass
W45×D12×H50 cm
Stoneware, 2001





Distillation
W400×D400×H200 cm
Stoneware, 2000



- 1974 Born in Yokohama, Japan
- 1997 Graduated Tama Art University
- 1999 Graduated Master of Fine Art at Tama Art University
- 2010 Artist of Japanese Government Overseas Study Programme for Artist.
- 2012 Graduated Master of Plastic Concept / Ceramic at Art University Linz

Solo & Group exhibition

- 2021 "STILLES LEBEN" curated Mag. Silvia Müllegger, Galerie Loft8, Vienna/Austria
- Cheongju craft biennale 2021, Cheongju, Korea
- UNDER CONSTRUCTION, Galerie Oberösterreichischer Kunstverein, Austria
- 2020 Sudou museum collection, Tama Art University Museum, Japan
- Kultur braucht Kunst! Sommer-Ausstellung 2020 SCHLOSSMUSEUM, Linz Austria
- 2019 Nakanojo Biennale 2019 Gunma pref., Japan.
- 2017 SELVES II/ORIE art gallery Tokyo, Japan.
- 2016 Abiko International Open Air Exhibition Japan, Artist in Residence.
- 2015 „Nineteenshirt“ La Musery, (Wien Austria)
- 2014 "Something is in Motion", Messnerhaus (Mieming, Tirol)
- 2013 DOMANI: The Art of Tomorrow 2013" Exhibition THE NATIONAL ART CENTER (Tokyo, Japan)
- C. Aono, F.J. Altenburg, R. Gschwantner Hausgalerie im Künstlerhaus Wien (Austria)
- 2012 SICHTWEISE Galerie Zauner (Linz, Austria)
- 2011 Kalte Gallery OO Kunstverein (Linz, Austria)
- New Millennium Japanese Ceramics: Rejecting Labels & Embracing Clay Northern Clay Center (Minneapolis, USA)
- 2010 Topseller-Geld, wirtschaft & Freunde Gallery OO kunstverein (Linz, Austria)
- Art fair Linz Landes Gallery (Linz, Austria)
- The Pleasure of Tea ceremony Gallery Utsuwa-kan (Kyoto, Japan)



- 2009 The Power of Decoration—A Viewpoint on Contemporary Kogei The National Museum of Modern Art-Craft&Design (Tokyo,Japan)
- The 6th International Ceramics Biennale Kapfenberg (Kapfenberg,Austria) / Keramik Museum Westerwald (Germany)
- Trace-of-rain Salzfertiger haus (Gmunden,Austria)
- Tropfenskulpturen Galerie Zauner (Linz,Austria)
- 2007 World Ceramic Biennial 2007 Icheon World Ceramic Center (Korea)
- The43th Kanagawa Art Exhibition 2007 Kanagawa Prefectural Gallery (Yokohama,Japan)
- The transparent wave returns Gallery Motomachi (Yokohama,Japan)
- 2006 Clay work by freeter Aoyama spiral (Tokyo,Japan)
- Art in the traditional house Ohtsukasaisyoudo ruins Park,Yokohama
- Curse gallery sou (Tokyo,Japan)
- 2005 WAVE AGE Sudou Museum (Tokyo,Japan)
- Preference Sanai gallery (Tokyo,Japan)
- International ceramics festival 2005 Mino Museum of Modern Ceramic Art (Gifu,Japan)
- The 41th Kanagawa Art Exhibition 2005 Kanagawa Prefectural Gallery (Yokohama,Japan)
- Multriple San-ai Gallery (Tokyo,Japan)
- 2004 hang down exhibit Live (Tokyo, Japan)
- 2003 The sway alga Sudou Gallery (Tokyo, Japan)
- Message from young artist Sudou Gallery (Tokyo,Japan)
- Peace of one hundred years =treasure= exhibit Live (Tokyo,Japan)
- 2002 a natural law exhibit Live (Tokyo, Japan)
- 2001 Forest Toki-artspace (Tokyo, Japan)
- 2000 Distillation Nabis Gallery (Tokyo, Japan)
- 1999 Spiral Nabis Gallery (Tokyo,Japan)

Award

- 2022 Stayed for 3 months as an invited artist at The Shigaraki Ceramic Cultural Park
- 2010 Japanese Government Overseas Study Programme for Artists
- 2005 The 41th Kanagawa Art Exhibition 2005 (second prize)
- 2003 Message from young artist Sudou Gallery (second prize)
- 1999 chiro Fukuzawa Prize for graduated at the head of Ceramic class.

Contact

<https://chiho-a.com>
mail@chiho-a.com



WEB



MAIL



INSTAGRAM

